

VPN Clients Quick Guide

iPortalMais

June 27, 2012

1 Introduction

This document intends to guide you through the whole process of enabling remote access via a VPN-SSL connection. Focusing on the end user (VPN clients).

2 VPN Clients

A VPN¹'s function is to allow remote access from the exterior (Internet for instance) to net resources of a certain LAN.

At the user's workstation it is necessary to install a specific client software that will allow remote access to the network's resources.

2.1 OpenVPN

OpenVPN is one of the most popular VPN client applications.

The installation of this pack should be executed without changing the default definitions. This software will be installed in `C:\Program Files\OpenVPN`.

The certificate generated by the IPBrick Administrator must be unpacked into directory `C:\Program Files\OpenVPN\config`.

To start a VPN connection, do a right click over the OpenVPN tray icon and select *Connect*.

Insert the password used to create the certificate in IPBrick and the VPN shall be established.

NOTE: All procedures (Installation and certificate import must be done with Administrator privileges)

2.1.1 OpenVPN Step-by-Step

At <http://openvpn.net/index.php/open-source/downloads.html> download the latest version of the Windows Installer file;

NOTE: The screenshots on this document refer to the 2.1.4 version, but you can download later versions of OpenVPN.

¹Virtual Private Networks

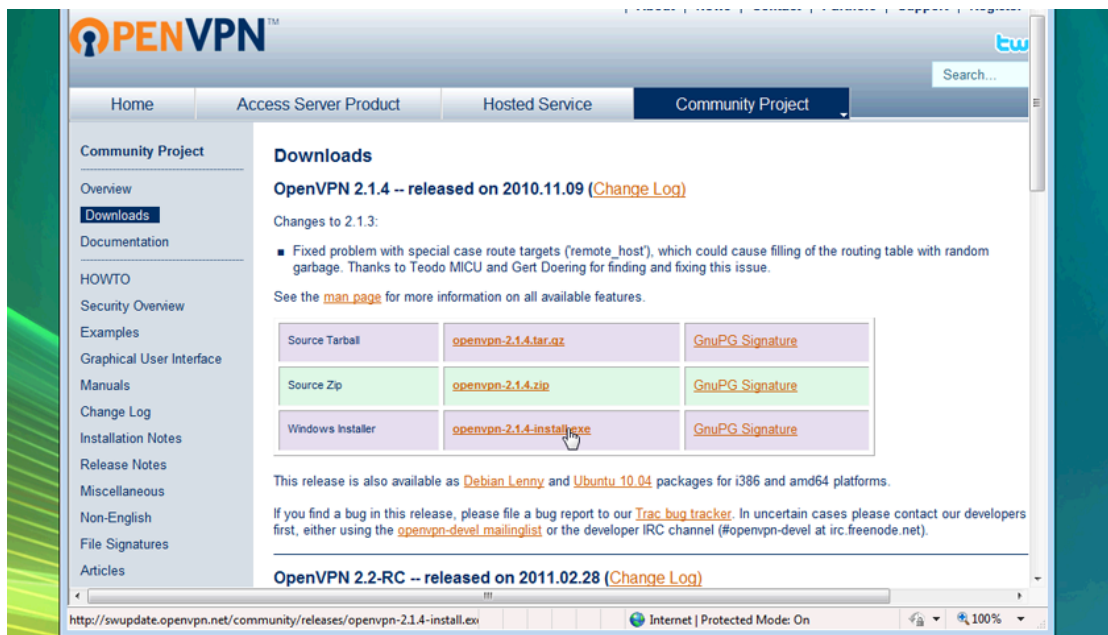


Figure 1: Select the Windows Installer option.

Click Run to run the installer.

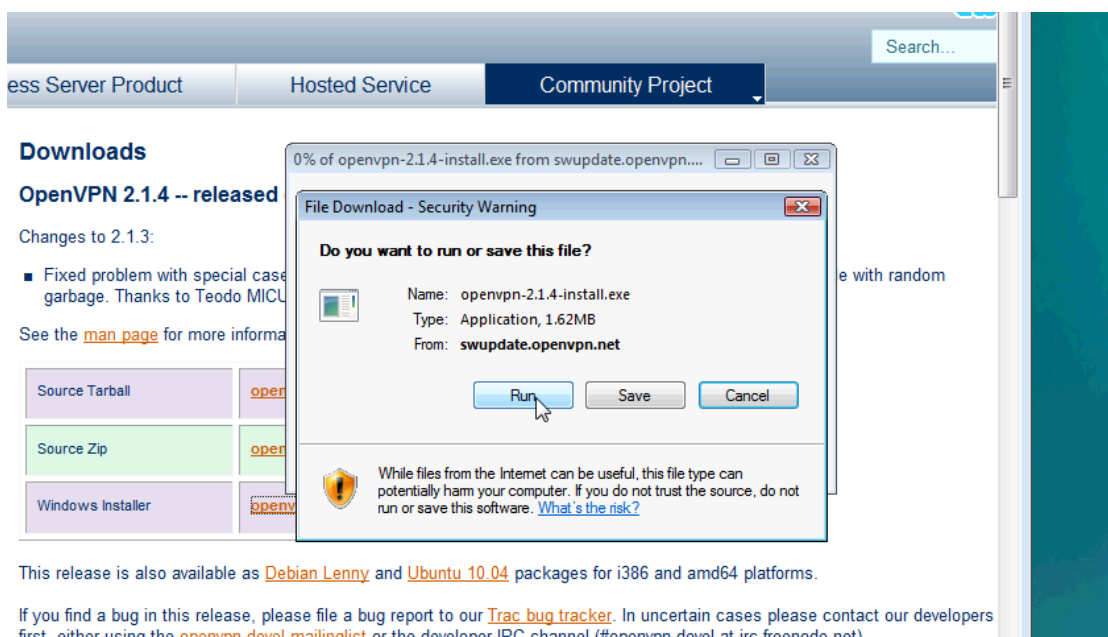


Figure 2:

You may encounter a Security Warning screen: "Do you want to run this software?". If you see the Security Warning screen, click Run to run the software.

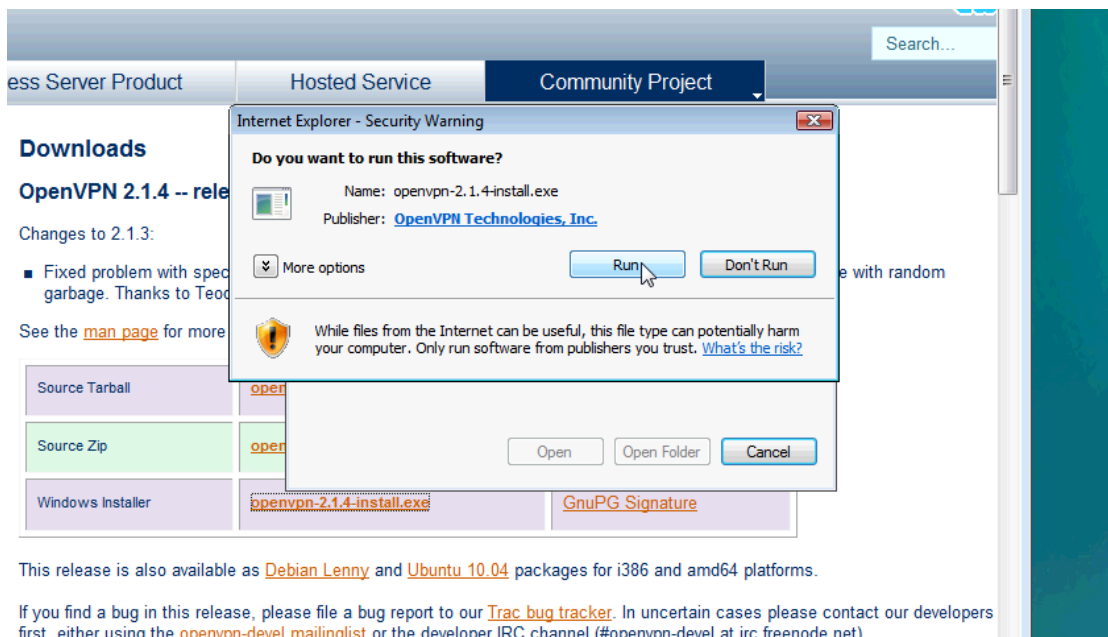


Figure 3: Security Warning

You may also encounter a User Account Control prompt: "A program needs your permission to continue." Click Continue.

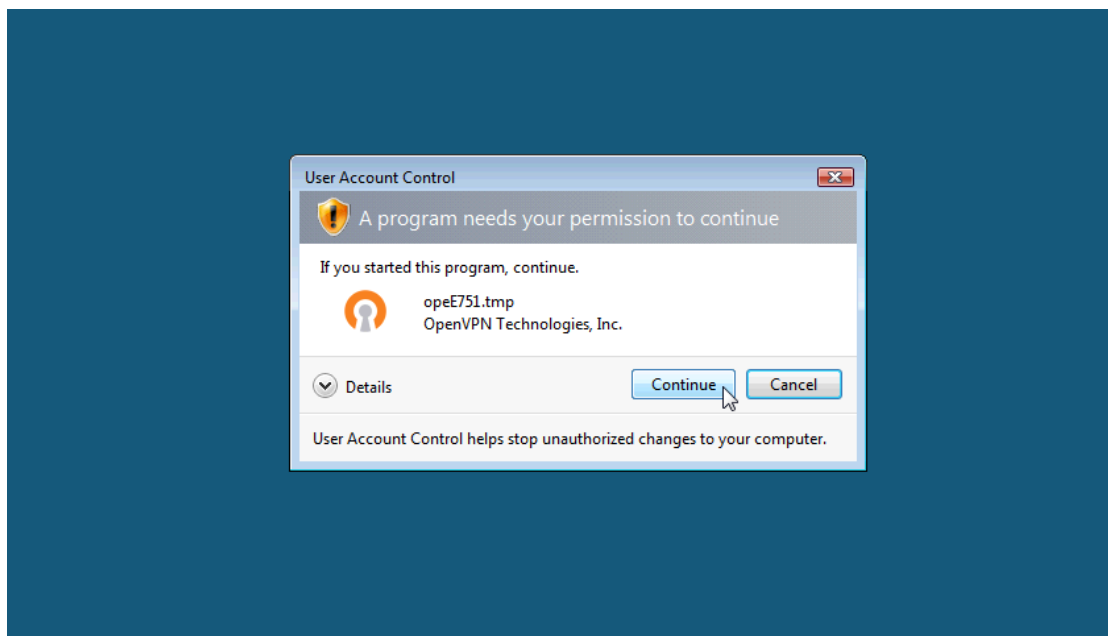


Figure 4:

The Setup Wizard prompt will appear. Click Next to continue.

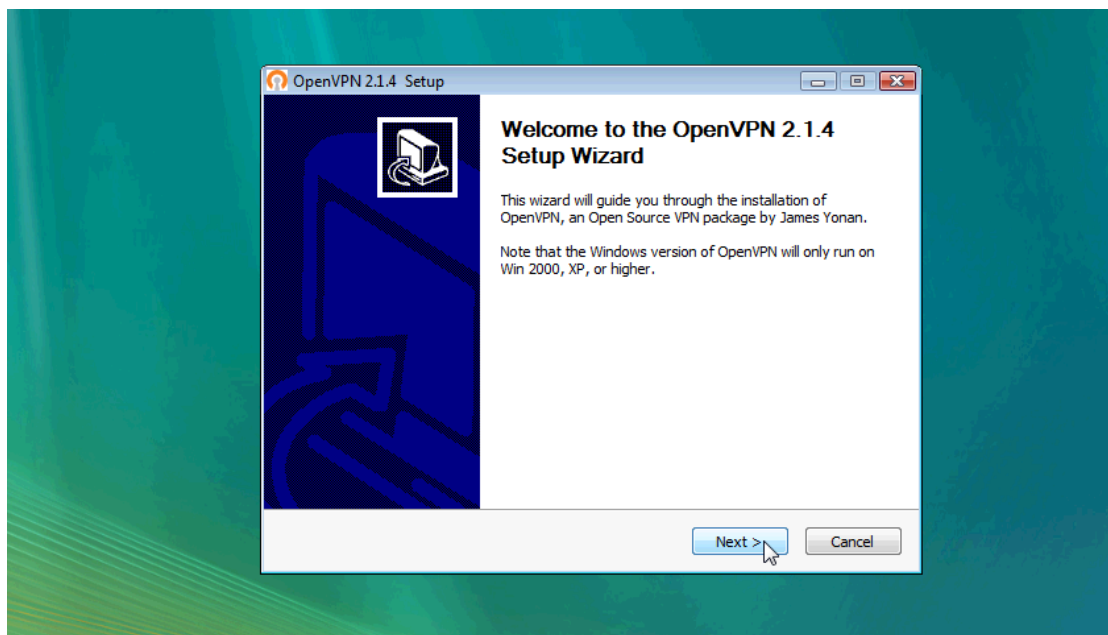


Figure 5: Setup Wizard

The OpenVPN license agreement and terms appear. Click I Agree to continue.

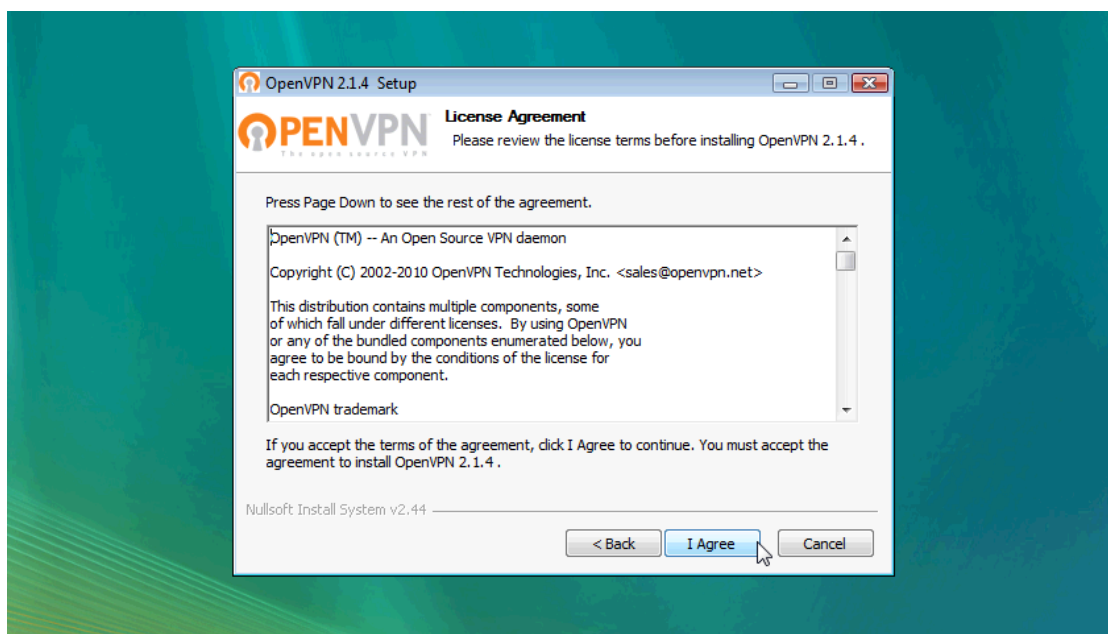


Figure 6: Click Run to run the installer.

The component selection dialog is visualized. Leave all components checked with their default settings and click Next.

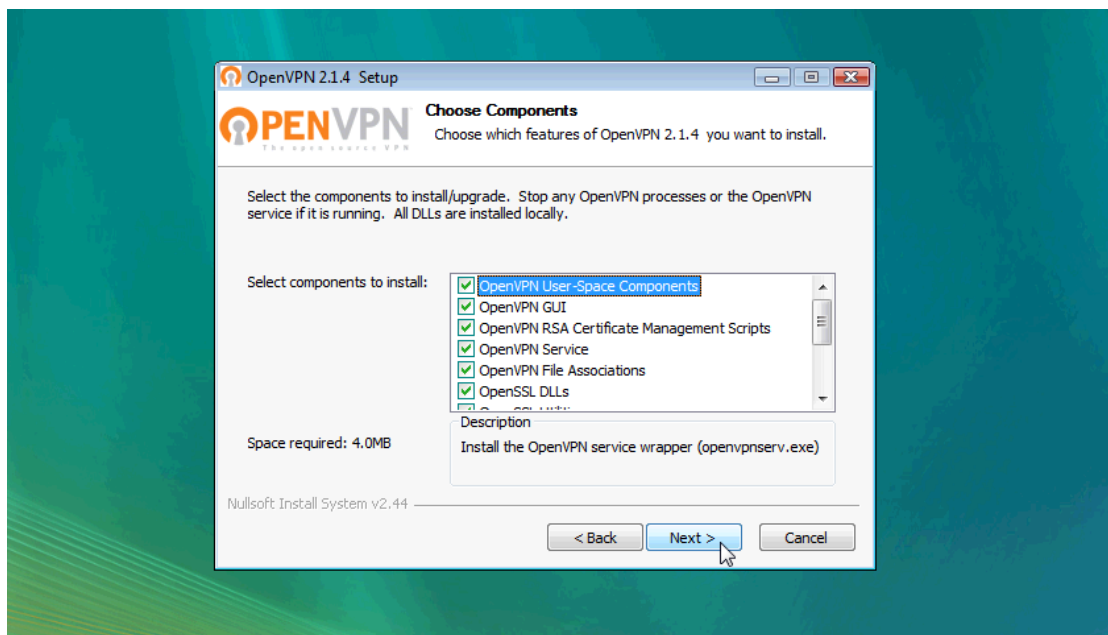


Figure 7: Component Selection

Select your destination folder and click Install. Note that the Destination Folder location during install (usually C:\Program Files\OpenVPN)

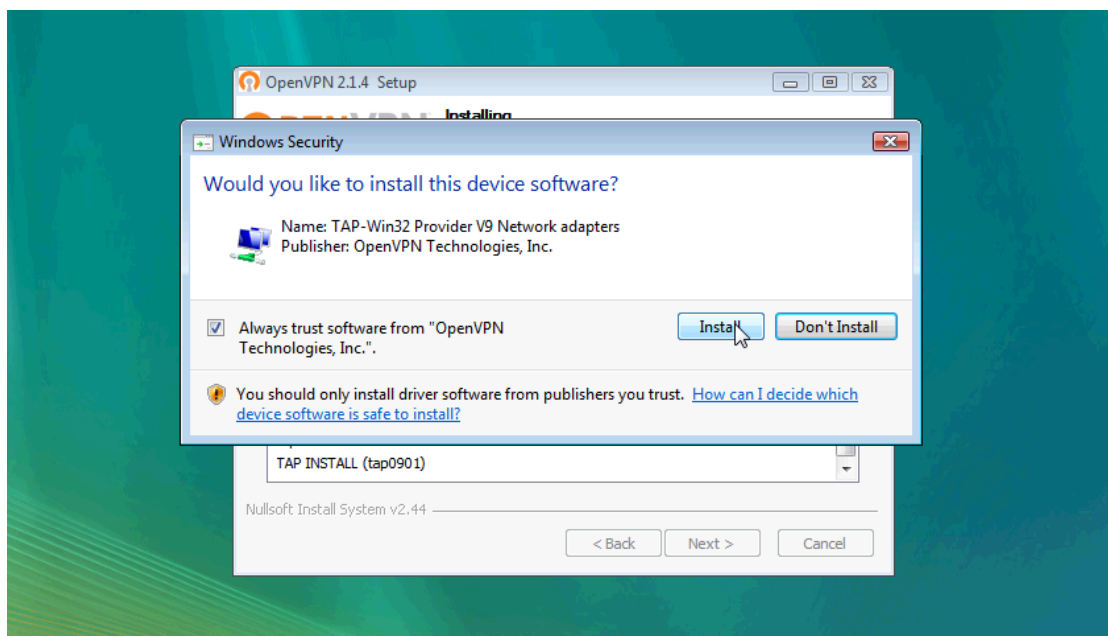


Figure 8: Destination Selection

When the installation is complete, click Next.

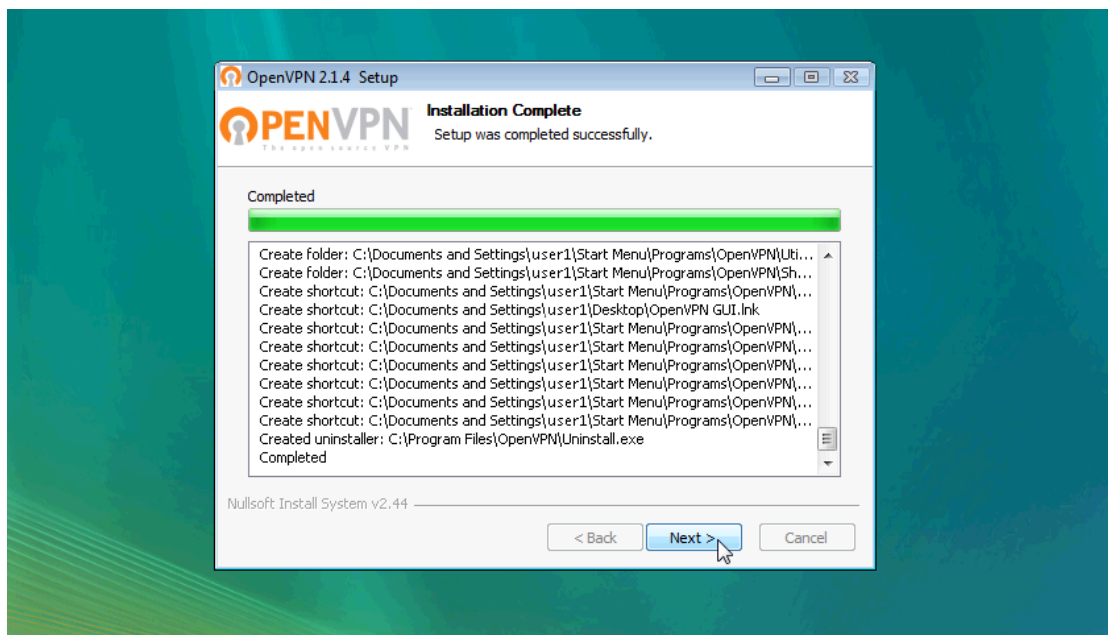


Figure 9: Installation

The wizard will notify you of the completion of the installation and prompt you to click Finish.



Figure 10: Wizard Final Notification

Extract the Certificate zip file to the `config` folder of OpenVPN

Usually C:\Program Files\OpenVPN\config;

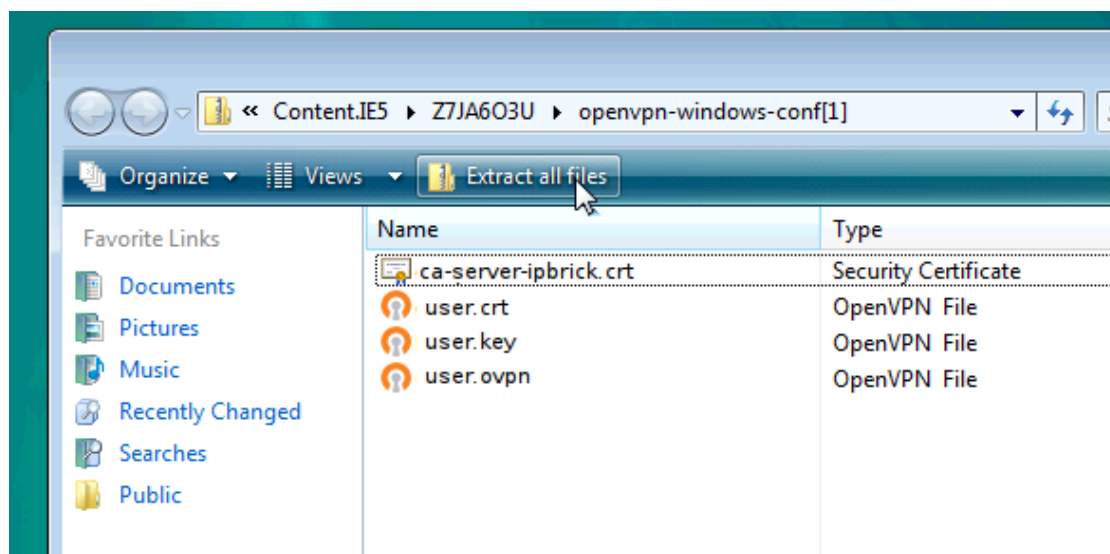


Figure 11: Extract Files

”Select a Destination” prompt will appear. Click Browse.

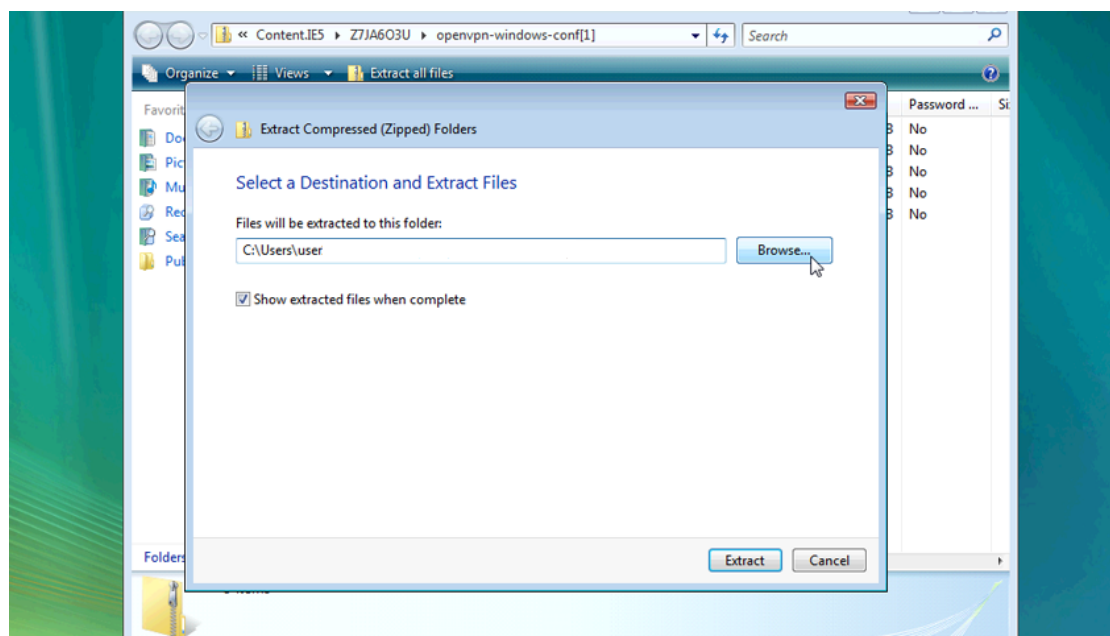


Figure 12: ”Select a Destination” prompt

Locate the Destination Folder (usually C:\Program Files\OpenVPN\config and find the config folder within it. Click OK.

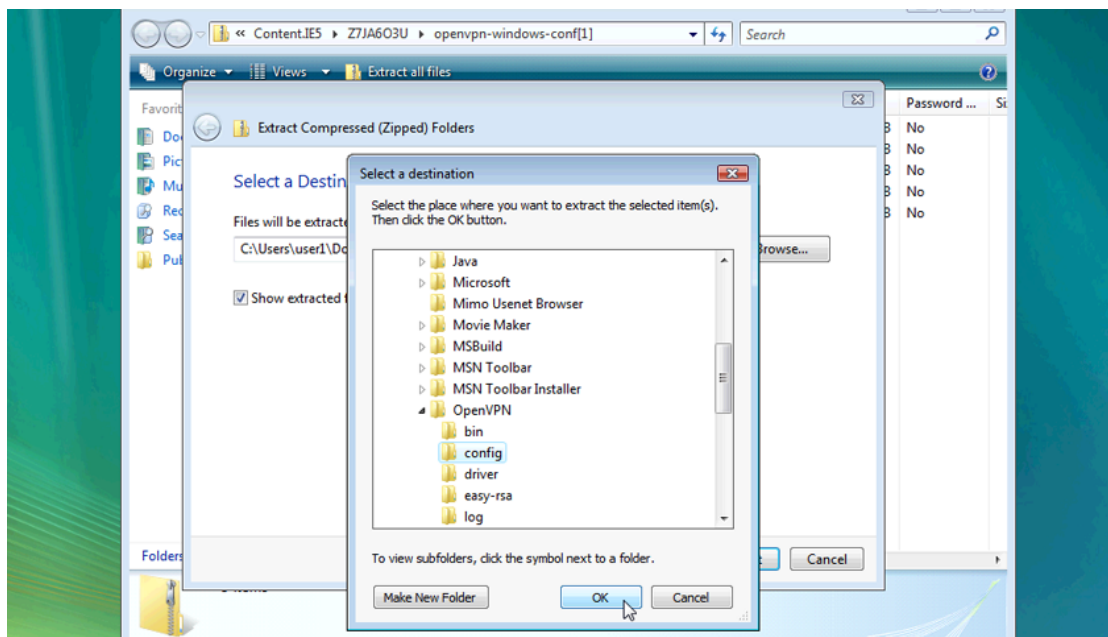


Figure 13: config Folder

Click Extract to begin extraction.

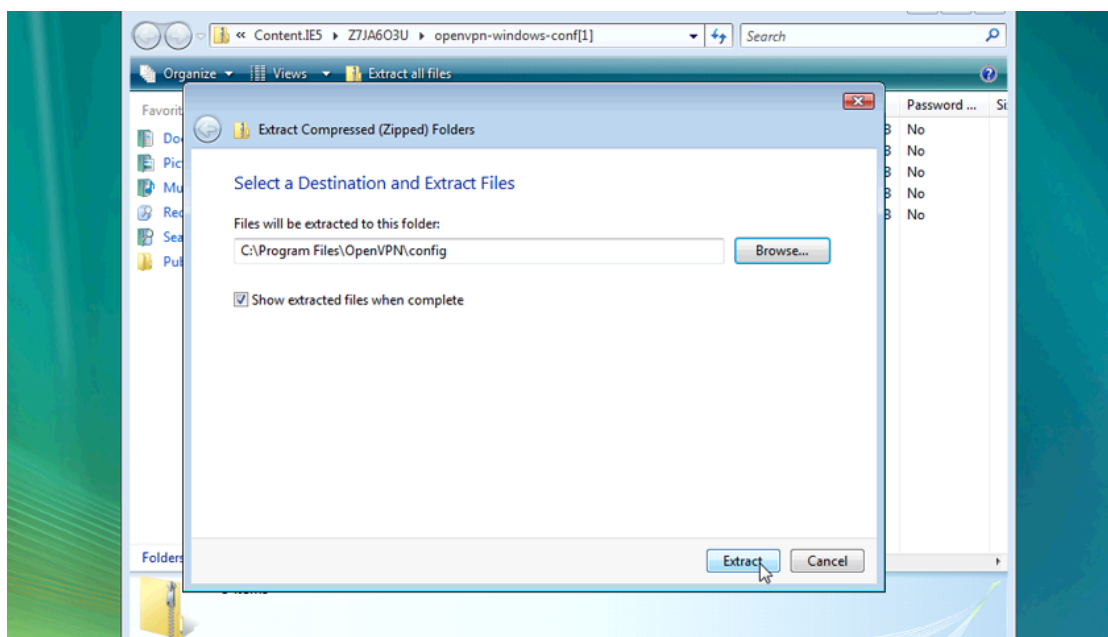


Figure 14: Extraction

You may need to provide administrator privileges to save the files. Click Continue.

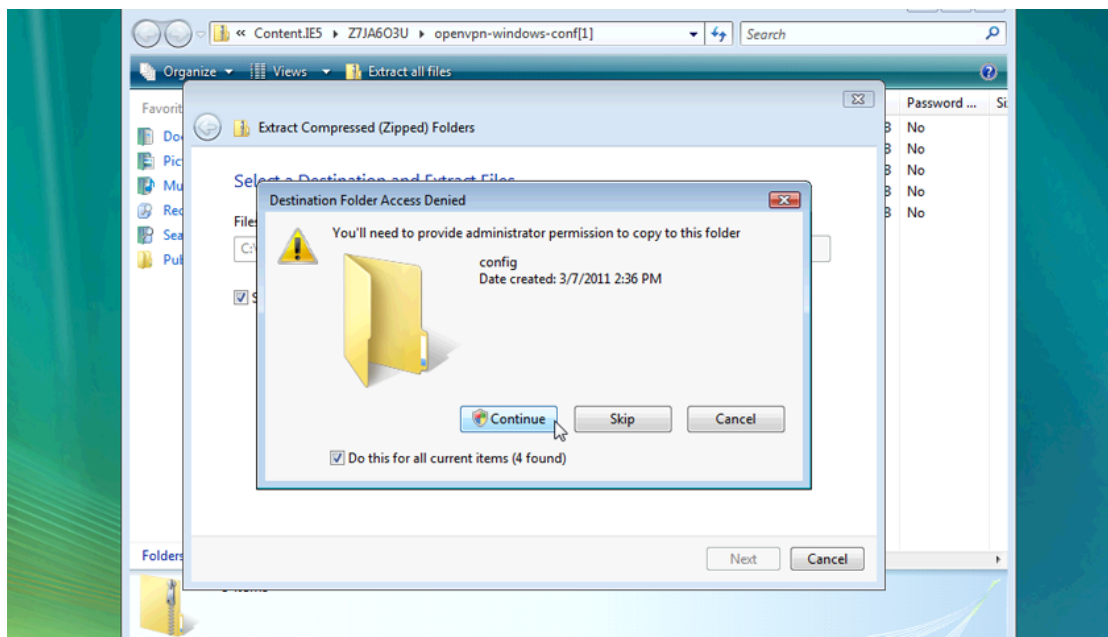


Figure 15: Administrator Privileges

Find the OpenVPN GUI icon on your desktop.



Figure 16: OpenVPN Shortcut

Right-click it to bring up a context menu. Select Properties

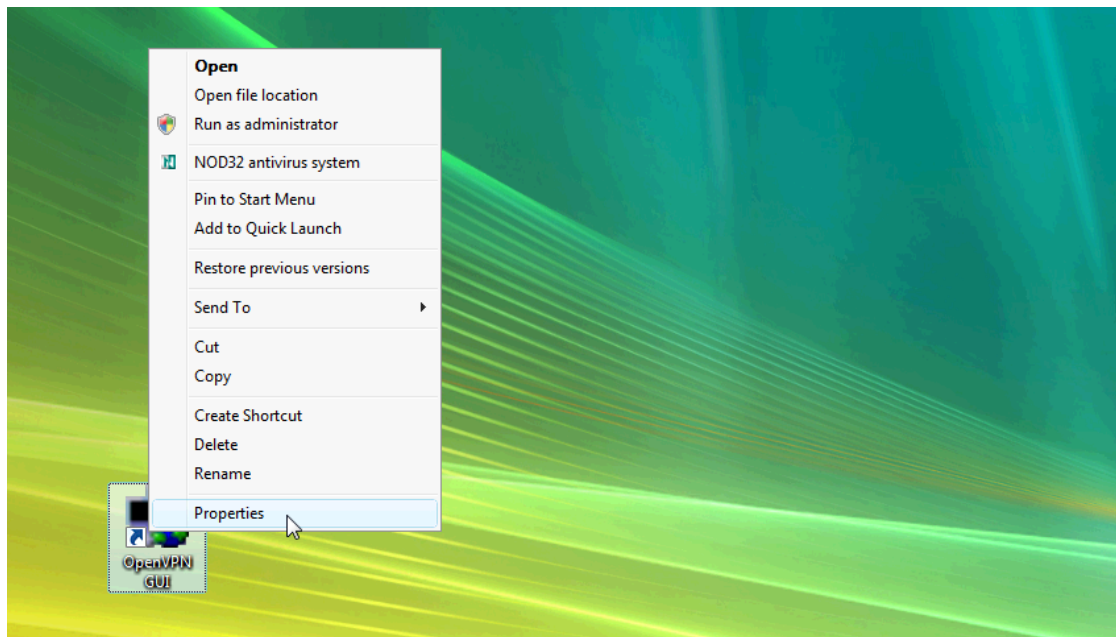


Figure 17: Context Menu

Click Advanced, then Select Run as Administrator.

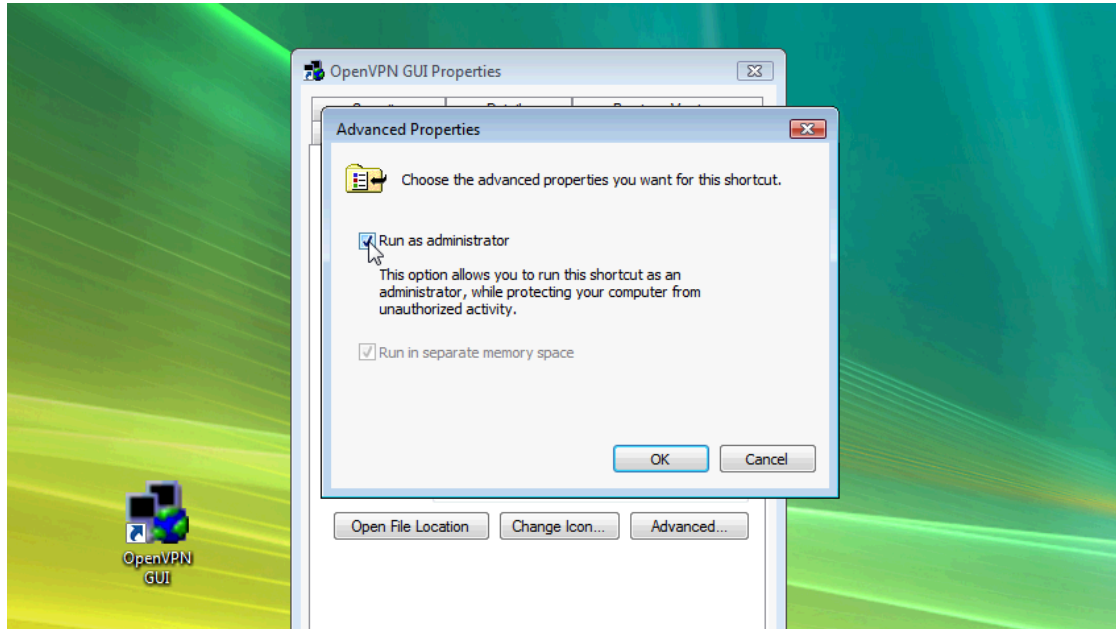


Figure 18:

Click OK.

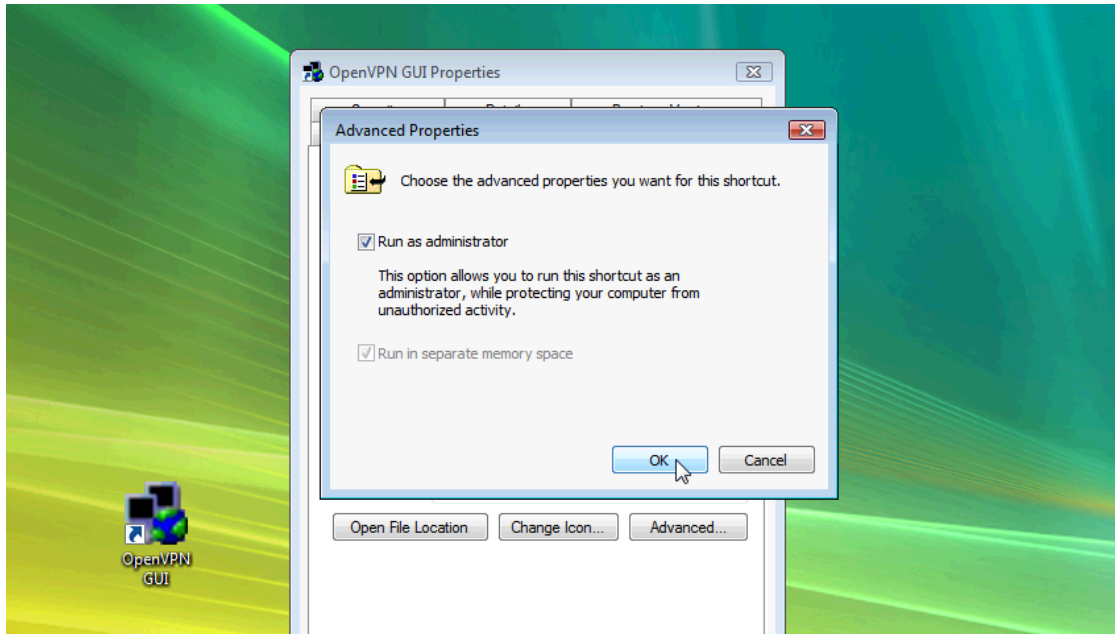


Figure 19:

Click OK to close the OpenVPN GUI properties.

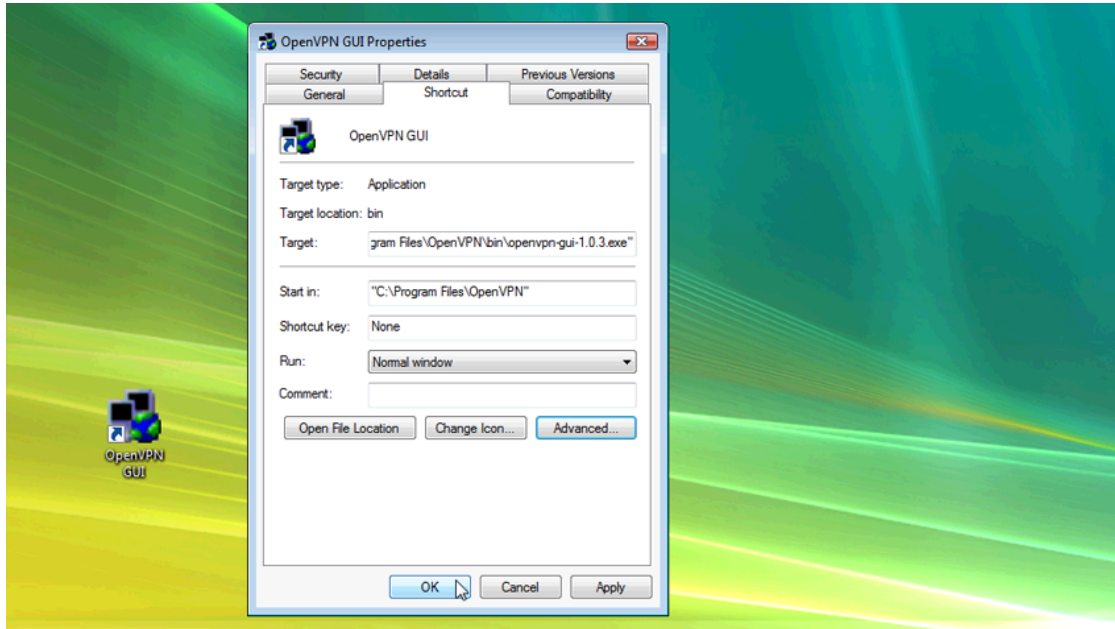


Figure 20:

In the Windows taskbar tray, right click on the OpenVPN GUI icon.

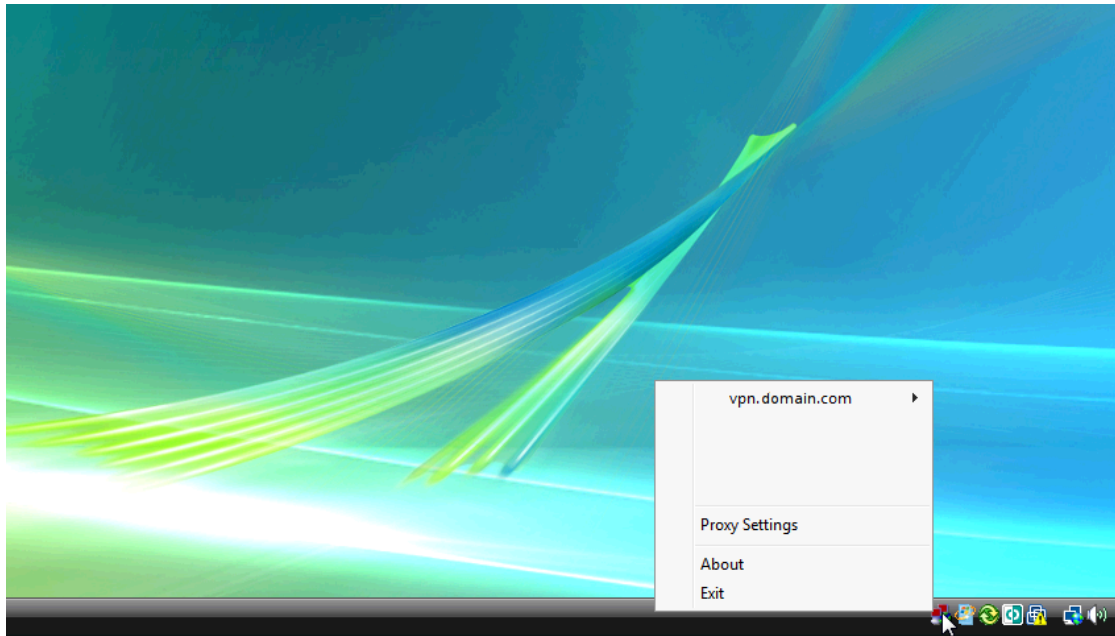


Figure 21:

Find the site to connect to from the menu, and choose Connect from the site's submenu.

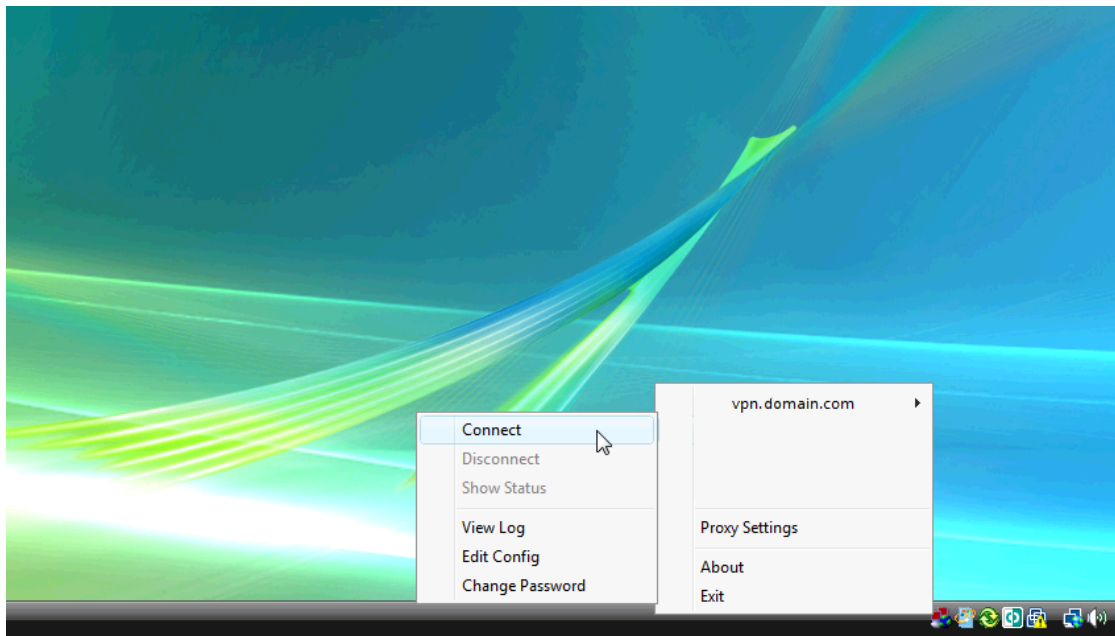


Figure 22:

Enter your Login and Password when prompted and click OK.

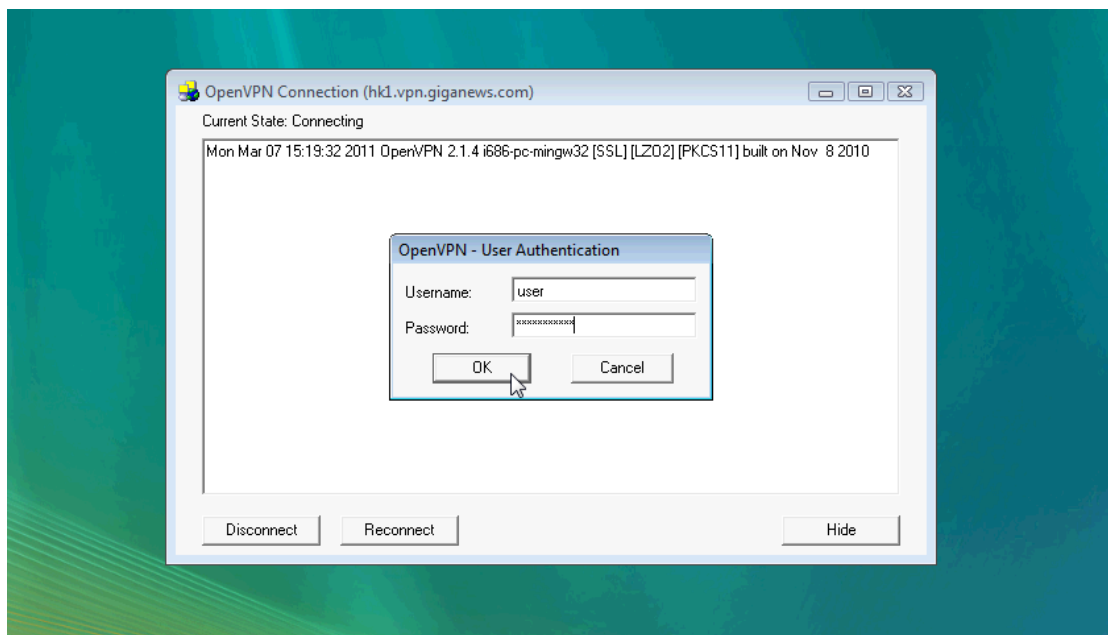


Figure 23:

The OpenVPN GUI icon in the tray will turn green once the secure connection is established.



Figure 24:

NOTE: If it's not working properly, you'll need to edit the *.ovpn file at:

C:\Program Files\OpenVPN\config

and add the following lines at the end:

```
route-method exe
route-delay 2
```

2.2 Securepoint SSL VPN

OpenVPN needs to run in an administrator mode, which is something that, as an end user, you may not be able to do.

If you are experiencing problems you may want to try another client app.

With the obvious exception of its installation procedure, Securepoint is a VPN client application that doesn't require administrator's privileges

2.2.1 Securepoint SSL VPN step-by-step

Download the Securepoint executable at:

http://sourceforge.net/projects/securepoint/files/SecurepointSSLVPN_RC4.exe/download

The installation procedure of Securepoint is very similar to OpenVPN.

After download, double click on the `SecurepointSSLVPN_RC4.exe`

You will be prompted to choose the installation language. Select the desired one and click on OK.



Figure 25: Installation Language Prompt

The Setup Wizard prompt will appear. Click Next to continue.

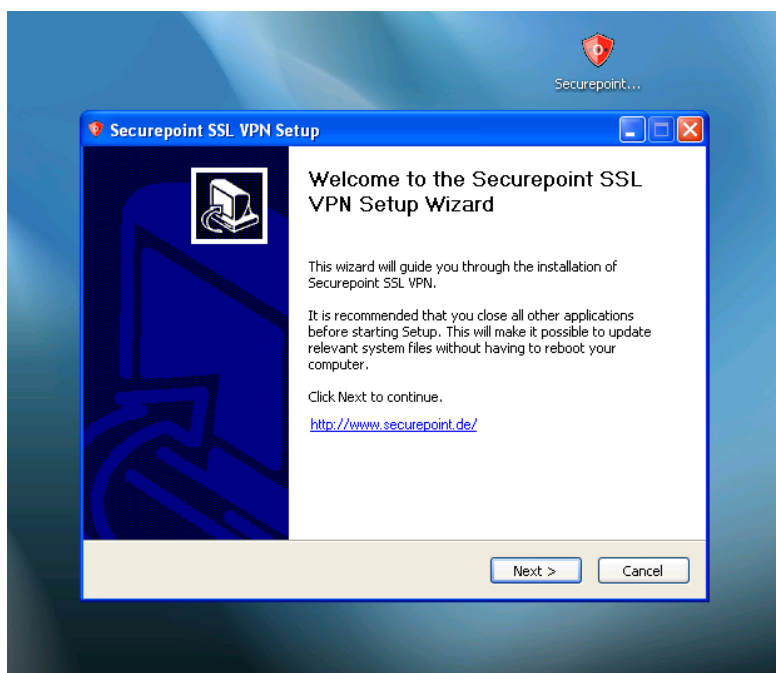


Figure 26: Setup Wizard Prompt

The Securepoint license agreement and terms appear. Click I Agree to continue.

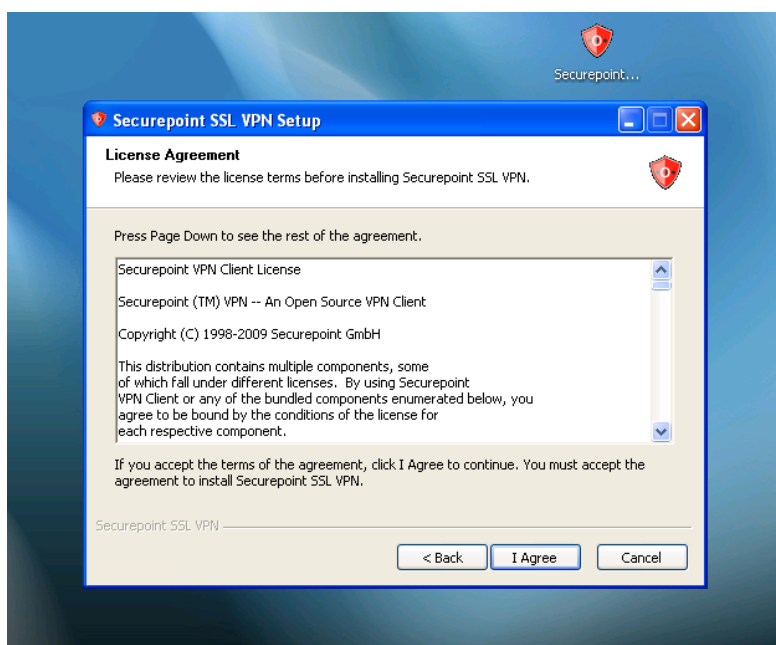


Figure 27: Securepoint license agreement

The Installation Context is visualized.

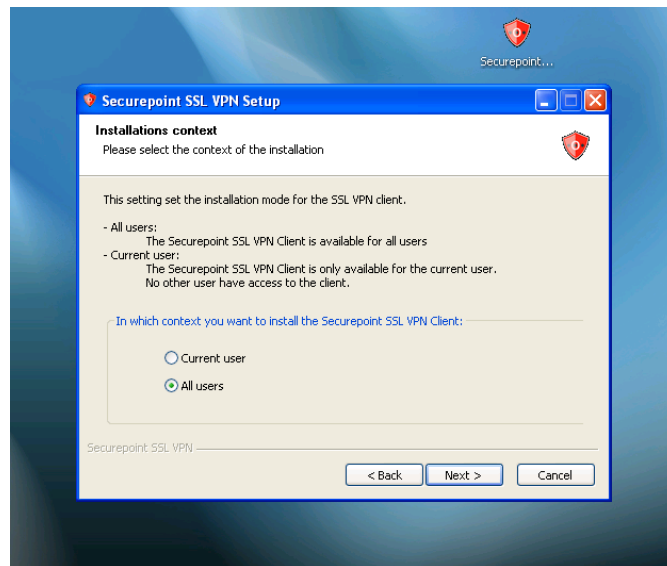


Figure 28: Installation Context

Leave the setting at Management and click Next.

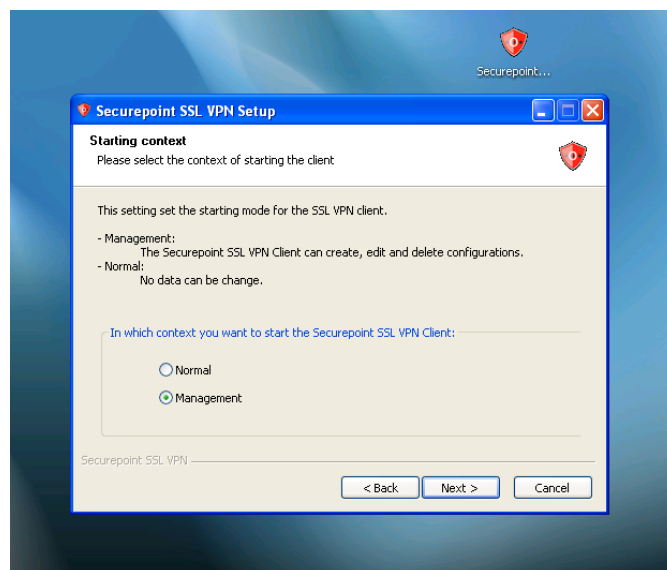


Figure 29: Starting Context

Select your destination folder and click Next.

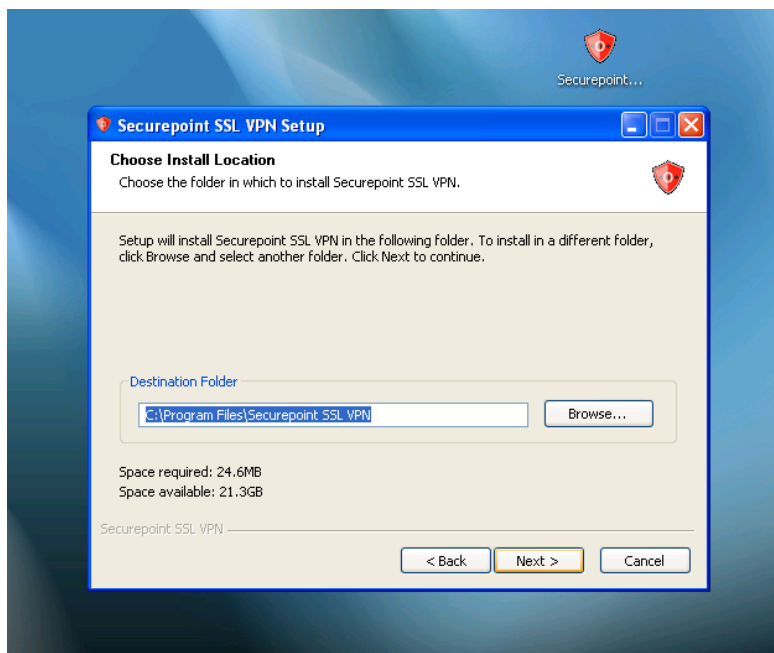


Figure 30: Install Location

Leave all components checked with their default settings and click Next.

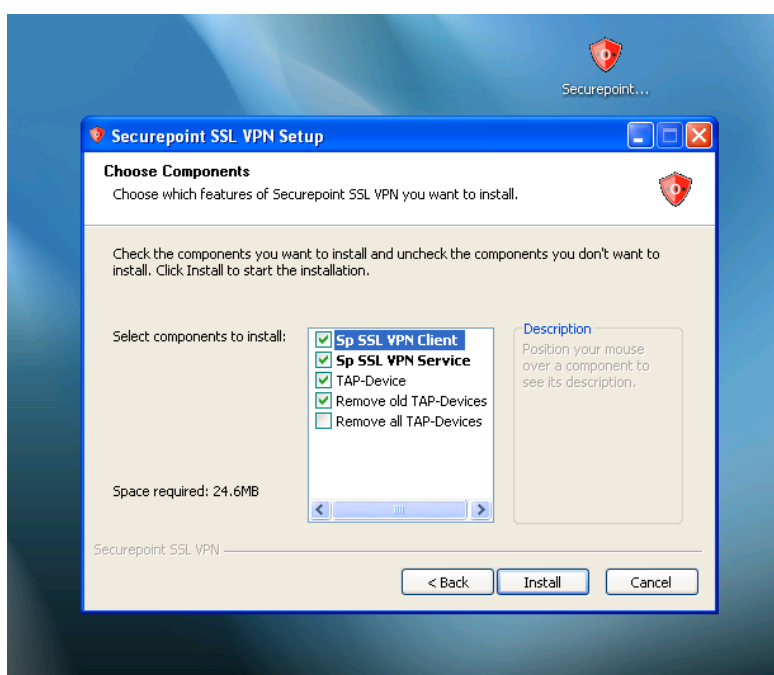


Figure 31: Choose Components

The installation begins.

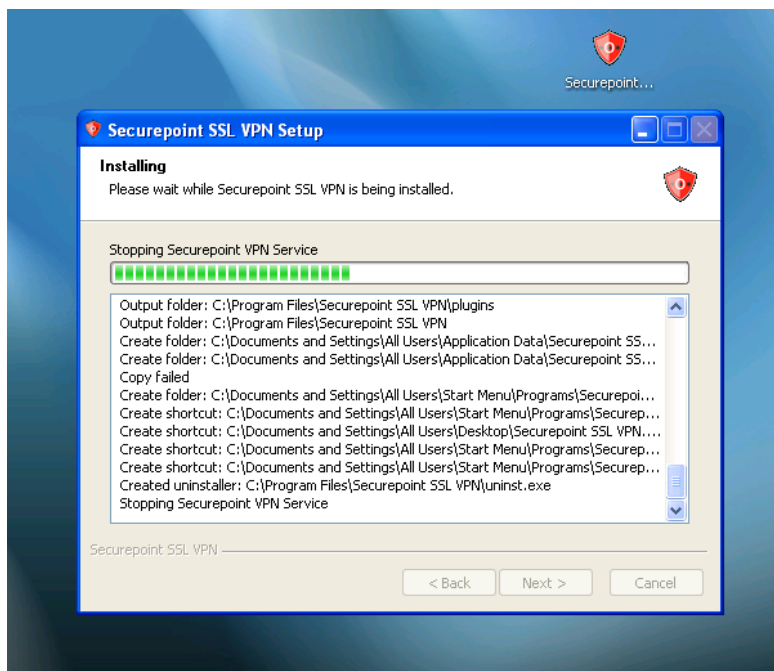


Figure 32: Installation

When you visualize the windows logo verification window click on Continue Anyway.



Figure 33: Windows Logo Verification

The wizard will notify you of the completion of the installation and prompt

you to click Finish.



Figure 34: Wizard Final Notification

If you wish you may start the app straight away, just click YES.

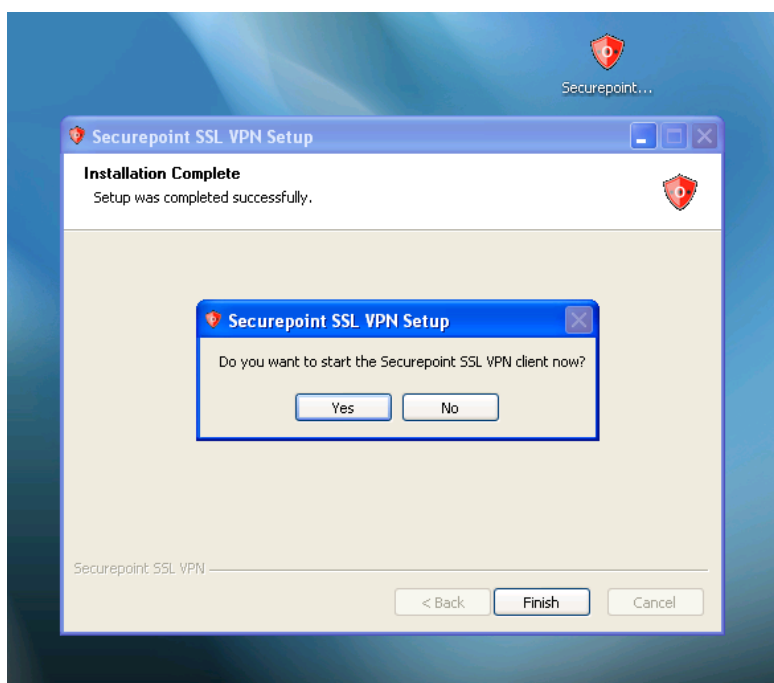


Figure 35: Start Prompt

The Securepoint VPN SSL Client application will start.



Figure 36: Securepoint VPN SSL Client application start

The procedures of extracting the certificate and running the application are similar to the ones described for the OpenVPN client. The only difference is that you don't need to be a System administrator. Extract the files to a easily accessible location (e.g. Desktop).

At the Securepoint interface click on Import.

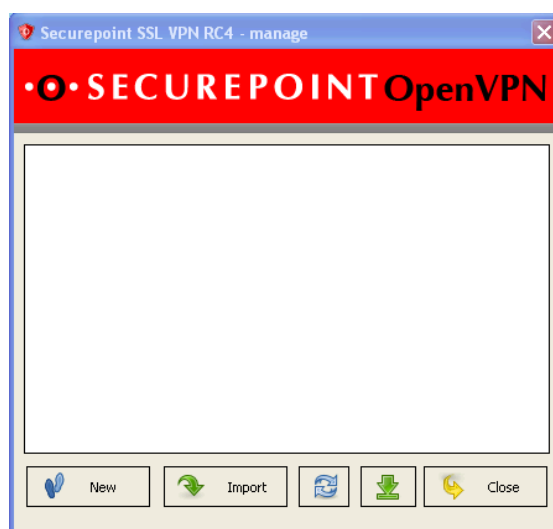


Figure 37: Securepoint VPN SSL Client application interface

Click on the browse button (...) of Import existing configuration

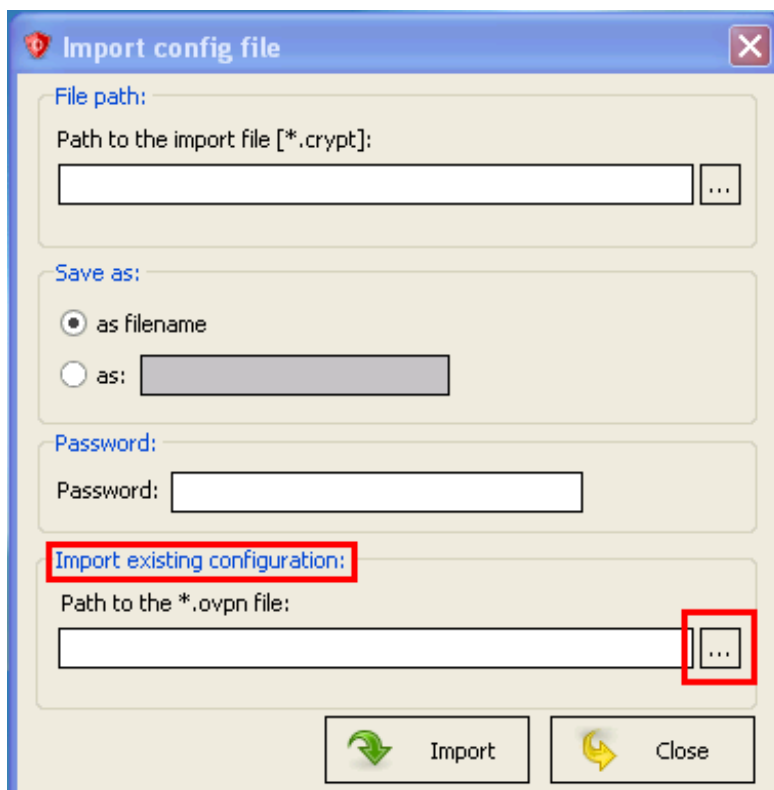


Figure 38: Import Configuration File

Browse to the location where you extracted the files.



Figure 39: Import Configuration File

Choose the .ovpn file and click on Import.

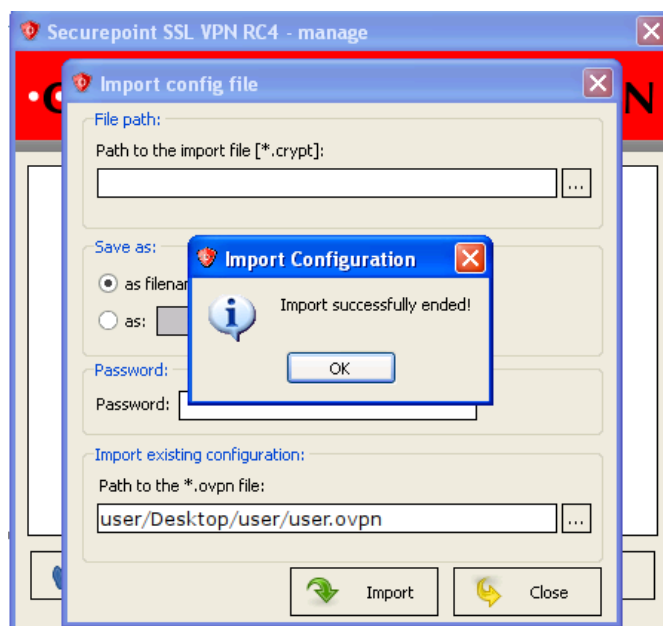


Figure 40: Import Successfully Ended

You will now visualize your connection. Click on Connect.

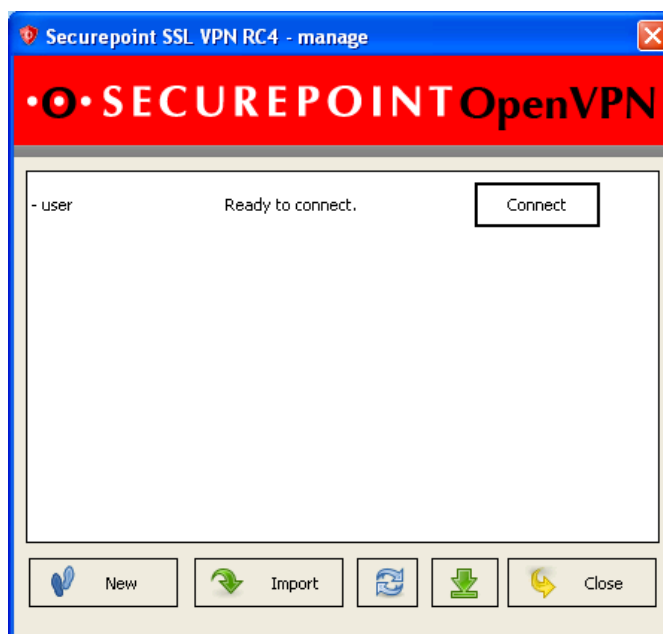


Figure 41: Available Connection

Insert your password.



Figure 42: Available Connection

Your connection will start.

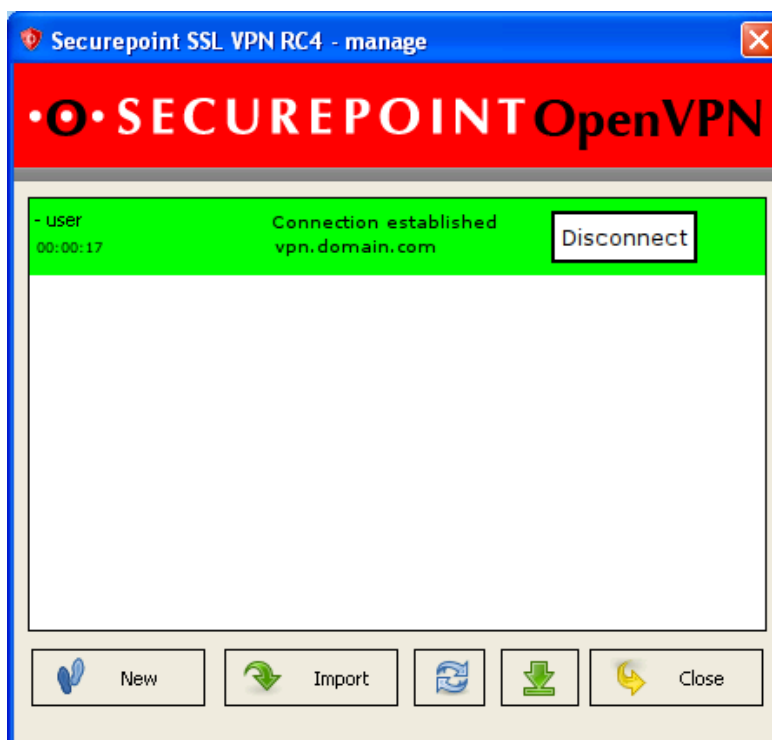


Figure 43: Connection Established